

EDGECOMBE FURNITURE

FOR RECORD ONLY



MODEL: 43181
SPEC #: PA-107
SCHEME: 3.2 GENERATION DYNAMIC

PRODUCT SPECIFICATIONS:

- Tightly upholstered counter stool with wood base and stretchers
- Featuring an exposed wood veneer panel face at outside back
- Fully finished solid wood legs with front, side, and back stretchers
- Featuring a metal U-channel at front stretcher
- Teflon glides

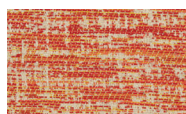
DIMENSIONS:

Overall: 18" W X 20" D X 36" H

Seat Height: 24"

Seat Depth: 16"

FABRIC:



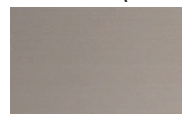
FIL DOUX TOME
CUSTOM CLEMEN-
TINE

FINISH: (WOOD)



MATCH WILSONART
HIGH LINE 7970K-18
LINEARITY

FINISH: (METAL)



EMF-11 SATIN
STAINLESS