

EDGECOMBE FURNITURE

FOR RECORD ONLY



MODEL: 43171
SPEC #: PA-106
SCHEME: 3.2 GENERATION DYNAMIC & VIBRANT

PRODUCT SPECIFICATIONS:

- Tightly upholstered dining chair with wood legs and ring stretcher
- Fully finished solid wood round legs with a 3/4" taper
- Featuring a metal tubular ring stretcher
- Teflon glides

DIMENSIONS:

Overall: 21" W X 25" D X 33" H

Seat Height: 18.5"

Seat Depth: 20"

EDGECOMBE FURNITURE

EDGECOMBE ID #: 43171 | DYNAMIC 3.2 SCHEME

FABRIC:



KB CONTRACT
FULTON RUBY

FINISH: (WOOD)



MATCH WILSONART
5TH AVE ELM
7966K-12

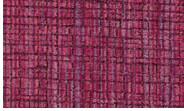
FINISH: (METAL)



EMF-20
MATTE BLACK

EDGECOMBE ID #: 43171 | VIBRANT 3.2 SCHEME

FABRIC:



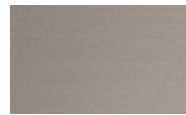
MOMENTUM
FOSTER MAGENTA

FINISH: (WOOD)



WILSONART NEO
WALNUT 7991K-12
FINE GRAIN FINISH

FINISH: (METAL)



EMF-11 SATIN
STAINLESS
