

EDGECOMBE FURNITURE



MODEL: 40955
SPEC #: PA-108
SCHEMES: 3.2 GENERATION DYNAMIC

PRODUCT SPECIFICATIONS:

- Tightly upholstered back and box seat with clean out
- Featuring 1 power unit in black finish comprised of (2) standard tamper resistant receptacles, (1) USB-A, and (1) USB-C
- Fully finished solid wood 3"H round legs
- Nylon glides

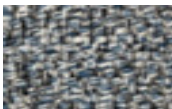
DIMENSIONS:

Overall: 60" W X 34" D X 32" H

Seat Height: 18"

Seat Depth: 24"

FABRIC:



FIL DOUX MAYARO SLATE
BLUE 30

FINISH:



5TH AVE ELM