

EDGECOMBE FURNITURE



MODEL: 5300-41251
SPEC #: LM-211
SCHEME: COURTYARD INSPIRED CLASSIC

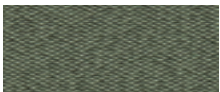
PRODUCT SPECIFICATIONS:

- Featuring a box wedge back cushion
- Semi-attached box seat cushion with upholstered seat deck
- Exposed solid wood frame, apron and tapered legs
- Nylon glides

DIMENSIONS:

Overall: 28"W X 30" D X 33" H
Seat Height: 19"
Seat Depth: 20"

FABRIC:



MAHARAM MELD VINE

FINISH:



WALNUT HEIGHTS