

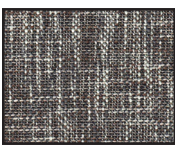
31821 LOUNGE CHAIR



X-214

OA WIDTH	29.5	ST WIDTH	22.75
OA DEPTH	35	ST DEPTH	22.5
OA HEIGHT	37.5	ST HEIGHT	16
ARM HEIGHT	20.75	COM YDS	3 (INSIDE), 2 (OUTSIDE)
WEIGHT LBS	44	CUBIC FEET	22.41

- FEATURES:
- TIGHT BACK
 - TIGHT SEAT
 - SELF WELT
 - POWDERCOAT METAL BASE & LEGS
 - CONCEALED NYLON GLIDES
 - CAL 117-13 COMPLIANT



PORT OF SPAIN
45

AND



CARIBOU CUSTOM
SABLE

WITH



MATTE BLACK
POWDERCOAT



22315 OTTOMAN

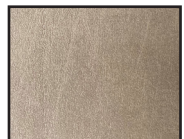


X-218

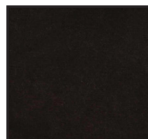
OA WIDTH	20	COM YDS	2
OA DEPTH	16	CUBIC FEET	2.96
OA HEIGHT	16	WEIGHT LBS	15

FEATURES:

- TIGHT TOP
- ROUNDED EDGES WITH SEAM ON TOP
- 1.5" CROWN ON TOP
- WOOD BASE
- NYLON GLIDES
- CAL 117-13 COMPLIANT



WITH



CARIBOU CUSTOM
SABLE

MATTE BLACK





11755 FULL SLEEPER SOFA

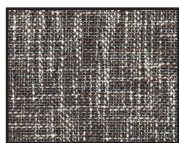


X-212

OA WIDTH	66	ST WIDTH	57.5
OA DEPTH	34.75	ST DEPTH	21
OA HEIGHT	30	ST HEIGHT	18.5
ARM HEIGHT	23.5	COM YDS	12
WEIGHT LBS	165	CUBIC FEET	31.19
STANDARD MECH.	905 CONTRACT	STANDARD MATT.	5" INNERSPRING

FEATURES:

- LOOSE BACK
- LOOSE SEAT
- WATERFALL EDGES ON FRONT AND BACK OF SEAT CUSHIONS
- WOOD BASE
- 5" INNERSPRING MATTRESS
- CAL 117-13 COMPLIANT



PORT OF SPAIN
45

WITH



FORMICA
PENCIL WOOD
7747-58



11765 OTTOMAN

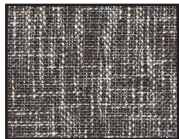


X-215

OA WIDTH	21	COM YDS	3
OA DEPTH	28.75	CUBIC FEET	6.29
OA HEIGHT	18	WEIGHT LBS	25

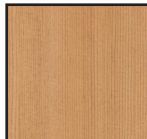
FEATURES:

- SEMI-ATTACHED TOP
- WATERFALL EDGES ON FRONT AND BACK
- WOOD BASE
- CAL 117-13 COMPLIANT



PORT OF SPAIN
45

WITH



FORMICA
PENCIL WOOD
7747-58

